

## Standard Diverter Model SDB

### Features

- Efficient Low Maintenance Design
- All Teflon Sealed Pneumatics Require No Lubrication
- Simple to Install and Easy to Use
- "Jam Free" Cable or Chain Operation
- Fast "On the Fly" Switching



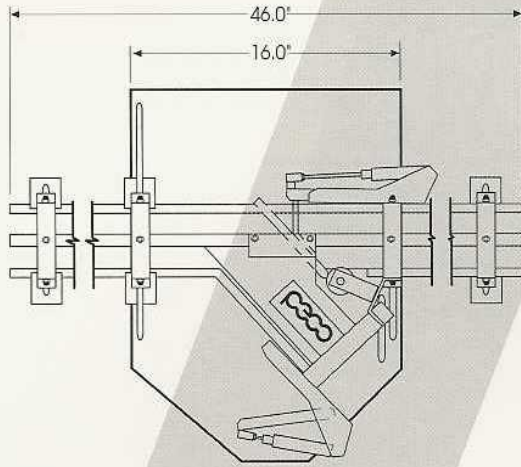
The **PECO Model SDB Standard Diverter** transfers containers from any single cable or chain conveyor to another conveyor or gravity track and back again without jams or disruption of container flow.

Every **SDB Diverter** is specifically configured for a specific application and thoroughly tested before shipping. Configurations are available for container sizes of 111 to 700 in height and 202 to 603 in diameter, for left or right discharge, cable or chain conveyors and 120 or 230 volt operation. Typical applications include; routing empty containers to multiple filler locations or filled containers to multiple packaging or labeling locations.

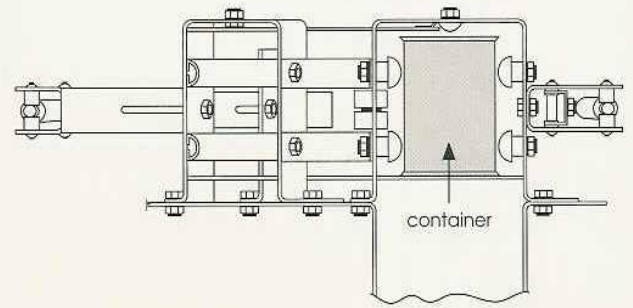
The **SDB's** efficient design incorporates a minimum of moving parts and Teflon sealed pneumatics which makes for easy installation, quick change-overs and an extended life of continual use, in even the harshest environments.

**PECO's SDB Diverter** comes complete, ready for installation including: Standard Diverter Assembly, mounting brackets, guard rails and manual for quick and easy set up and operation.

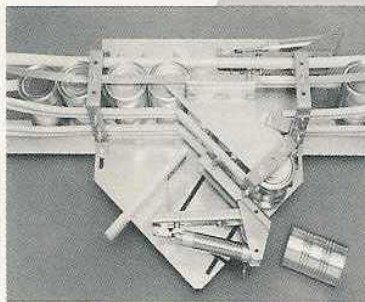




Model SDB (Top View)



Model SDB Flat top chain conveyor (End View)



### Technical Specifications

Power	120 VAC, 60 Hz (8.2VA) 230 VAC, 50 Hz or 60 Hz (6.0 VA)
Air Required: Supply Pressure	50 to 125 psi
Operating Temperature	40°F to 120°F
Dimensions	46" long x 21" wide x 23" to 30" high

### Standard Equipment

- Model SDB Standard Diverter
- All Mounting Hardware
- Installation and Operating Manual

### Note:

The SDB Standard Diverter has been designed for cylindrical containers with flat bottoms and/or tops. Peco Controls invites inquiries regarding other containers including aerosol cans, PET plastic cup bottoms, oil filters, and similar elements.

### Ordering Information

Specify-Container Size, Discharge Direction, Cable or Chain, Voltage and Conveyor.

**Peco Controls Corporation**  
450 Montague Expressway  
Milpitas, CA 95035  
(408) 262-4050  
(408) 262-6693 Fax